



Better. By Design.

General Purpose Relays

NEW!



Compact, durable designs for high density applications



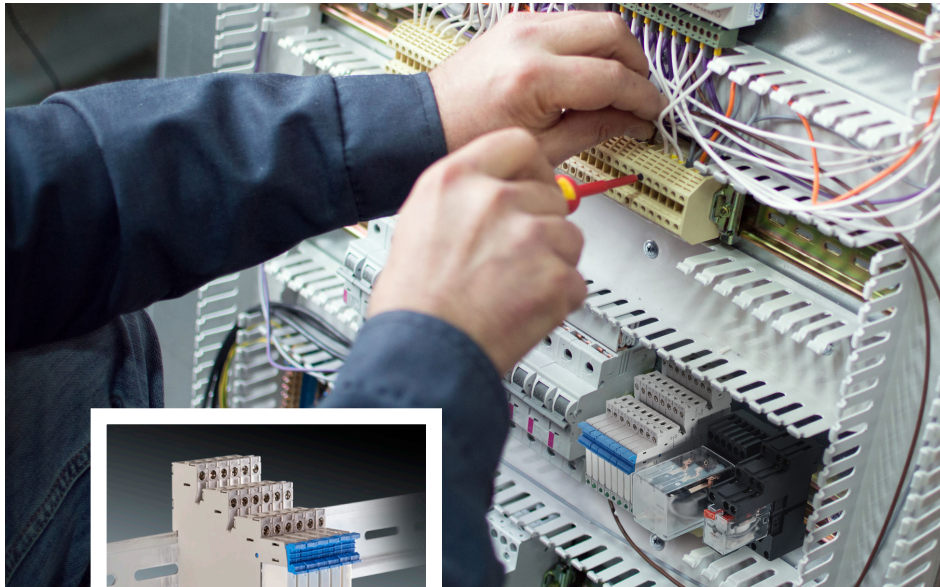
General Purpose Relays are designed for easy installation, testing and troubleshooting. Push-to-test buttons are color coded – orange for AC and blue for DC voltage coils. The buttons can be locked in place for testing. LED lights provide confirmation that the relay is energized.



Compact relays are used for high density applications. Durable designs and quality assembly ensure high performance and economical operation. A choice of slim, blade or octal configurations can be quickly installed with sockets for DIN-rail or screw mounting.

General Purpose Relays

Compact, side-by-side mounting simplifies installation and wiring for reduced costs.



Macromatic GS Series relays installed on sockets are only 0.25 in (6 mm) wide, making very efficient use of limited panel space.

SPACE-EFFICIENT PANEL DESIGNS

Small-profile General Purpose Relays make the best use of panel space in applications with space restrictions.

These economical relays offer a choice of three styles with a range of advantages:

- Models with high capacity to 12 Amp
- Common control voltages
- Quick and economical installation
- LED indication of power
- Available in convenient multi-packs

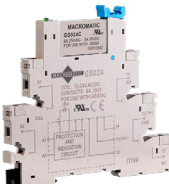


Blade and Octal Relays offer:

- Color-coded push-to-test buttons (AC coils are orange; DC coils are blue)
- Buttons can be locked for testing
- Transparent covers to monitor operation
- Schematic diagrams on the enclosure for easy reference
- Sockets can be DIN-rail or screw mounted

UL/cUL and CE safety approvals



SELECTION TABLE

	OUTPUT CONTACTS	CONTACT RATING	CONTROL VOLTAGE	CATALOG NUMBER	SOCKET
	GS Slim Series:				
	1 Form C	6 Amp	24V AC/DC	GSC024C ■	—
	1 Form C	6 Amp	120V AC/DC	GSC120C ■	—
	GB Blade Series:				
	2 Form C	12 Amp	24V AC	GB024A2	SB22C5
	2 Form C	12 Amp	24V DC	GB024D2	SB22C5
	2 Form C	12 Amp	120V AC	GB120A2	SB22C5
	2 Form C	12 Amp	240V AC	GB240A2	SB22C5
	4 Form C	10 Amp	24V AC	GB024A4	18F-4Z-C1
	4 Form C	10 Amp	24V DC	GB120D4	18F-4Z-C1
	4 Form C	10 Amp	120V AC	GB120A4	18F-4Z-C1
	GR Octal (Round) Series:				
	2 Form C	10 Amp	24V DC	GR024D2	SR2ZC3
	2 Form C	10 Amp	120V AC	GR120A2	SR2ZC3
	3 Form C	10 Amp	24V DC	GR024D3	SR3ZC3
	3 Form C	10 Amp	120V AC	GR120A3	SR3ZC3

■ GS Series relays and sockets are assembled as one unit and must be used together.